

# The Norway Maple



Plans and specifications are subject to change without notice. Actual usable space may vary from stated floor area. E.&O.E.

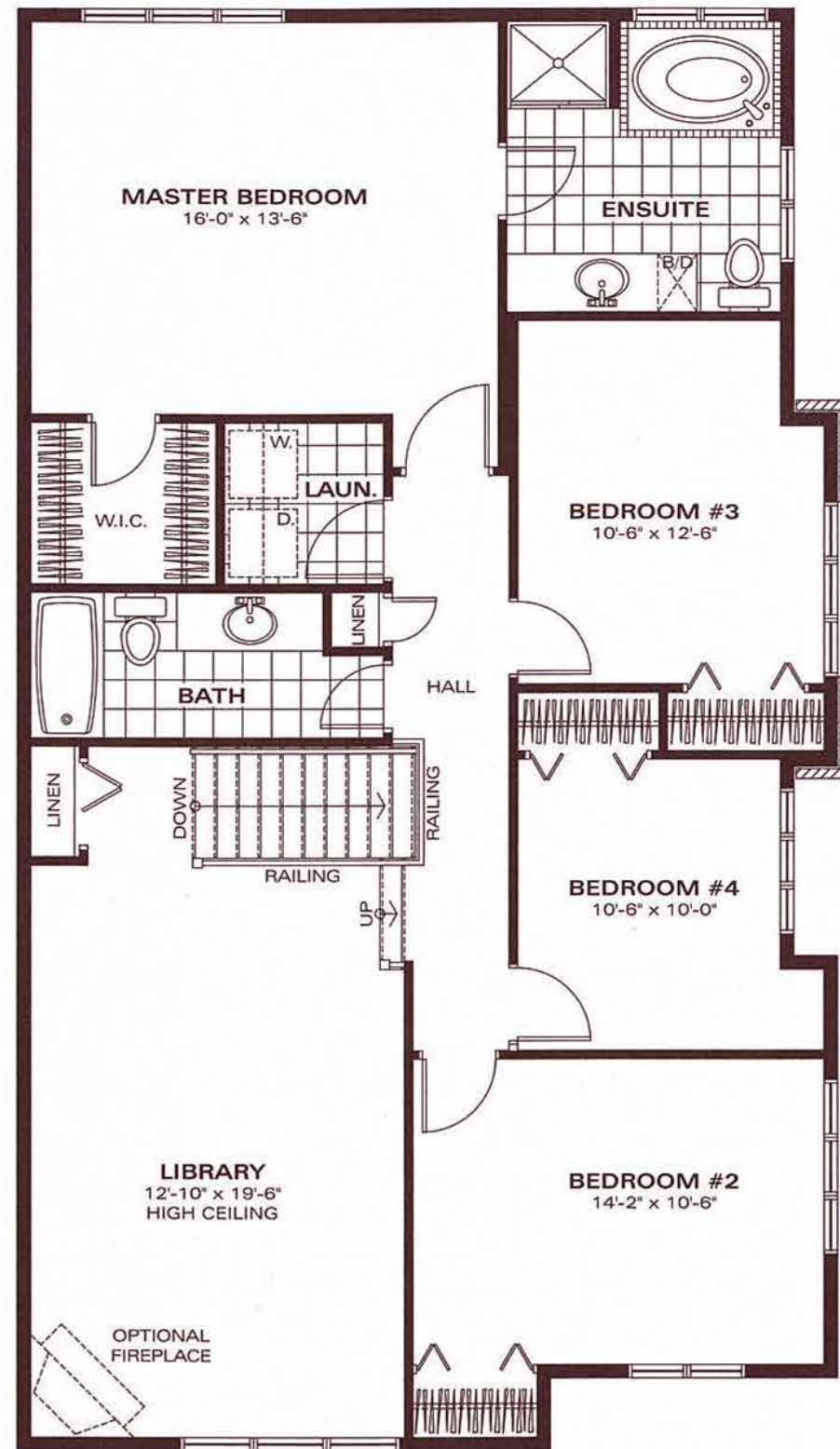
*J. P. [Signature]*

**FRONT ELEVATION** 2385 SQ.FT. - 4 BEDROOM - 2½ BATHROOMS

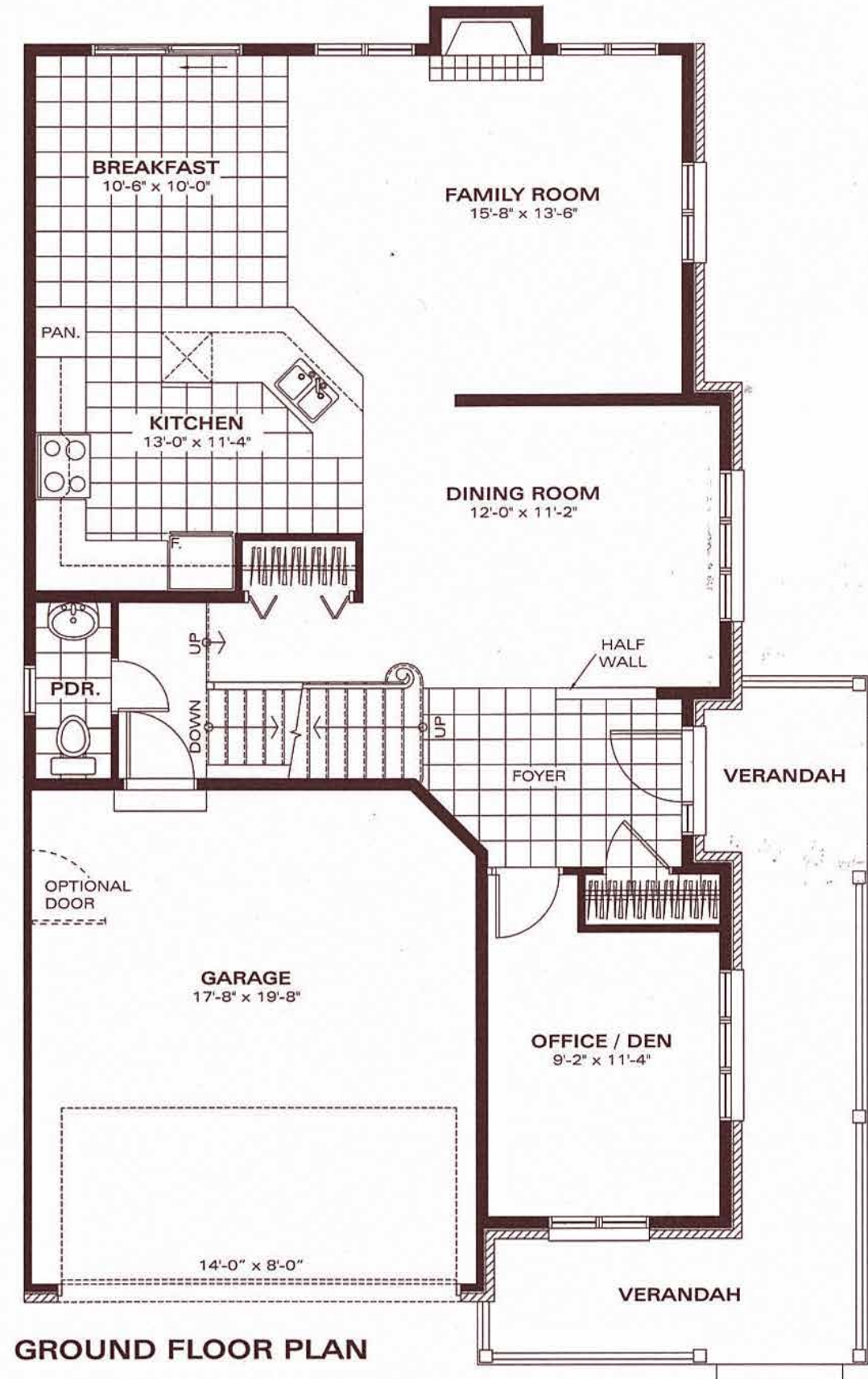
[TrilliumHomes.ca](http://TrilliumHomes.ca)



# The Norway Maple



SECOND FLOOR PLAN



GROUND FLOOR PLAN

Plans and specifications are subject to change without notice. Actual usable space may vary from stated floor area. E.&O.E.