

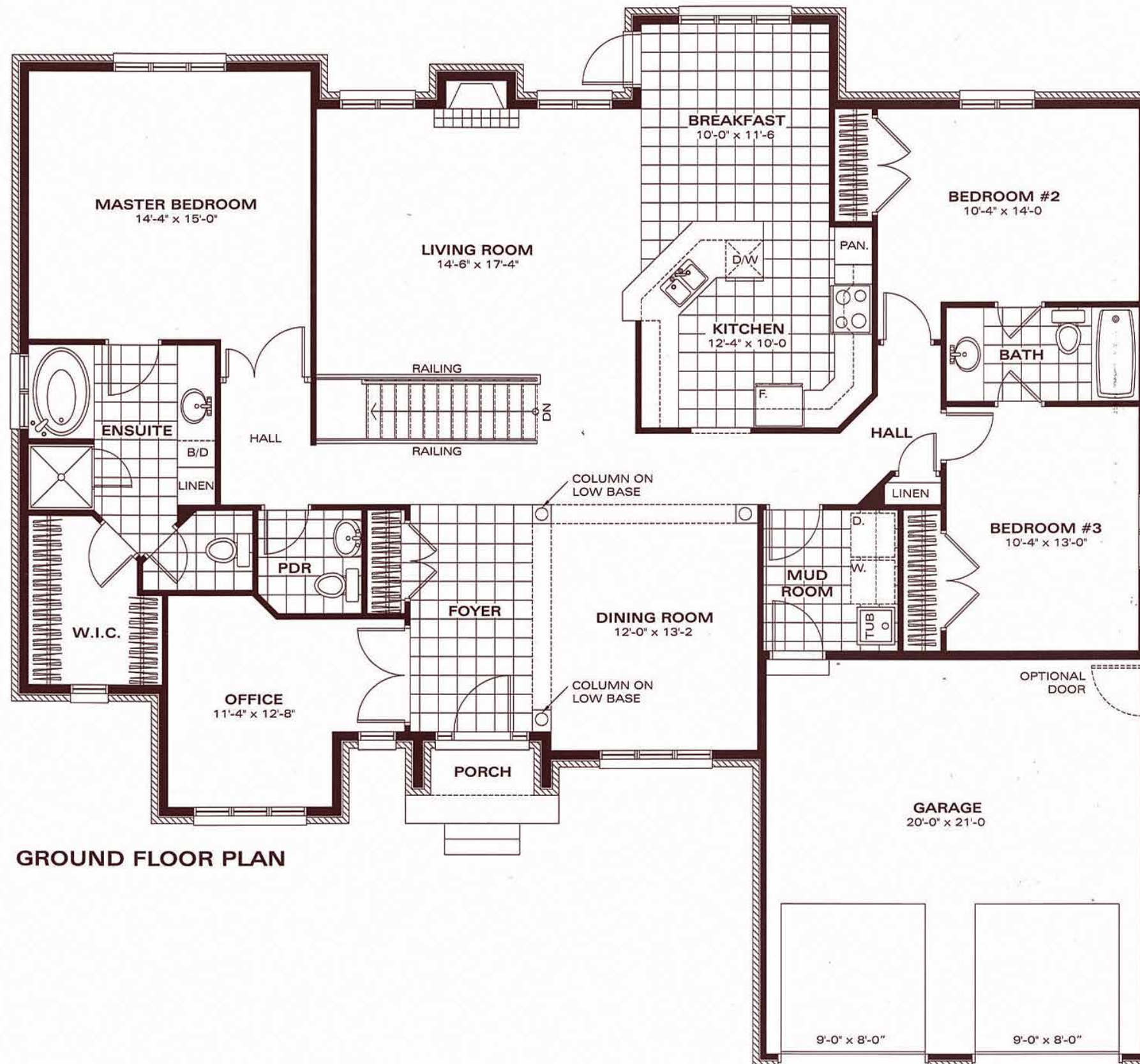
The Jack Pine



Plans and specifications are subject to change without notice. Actual usable space may vary from stated floor area. E.&O.E.

FRONT ELEVATION 2150 SQ.FT. - 3 BEDROOMS - 2½ BATHROOMS

TrilliumHomes.ca



GROUND FLOOR PLAN

Plans and specifications are subject to change without notice. Actual usable space may vary from stated floor area. E.&O.E.