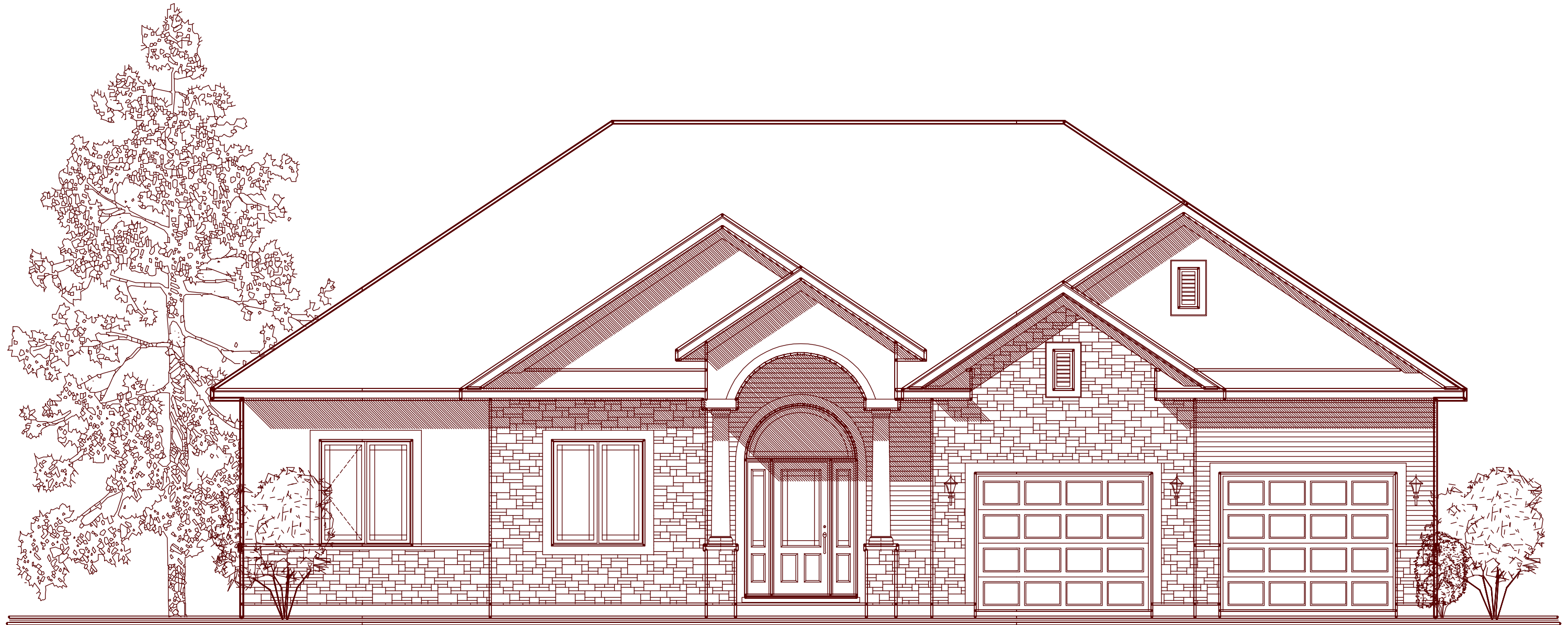


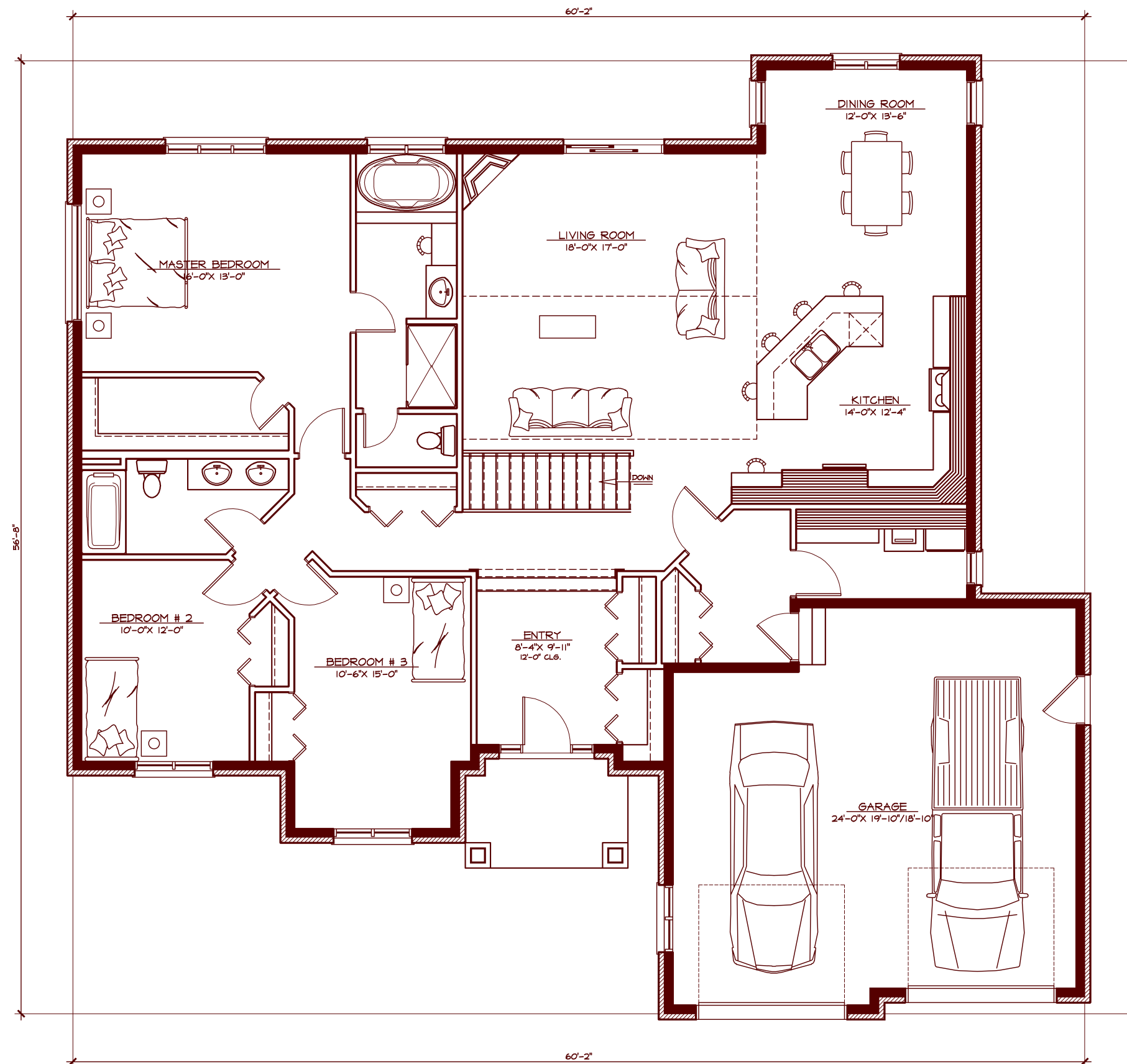
# Hazel



Plans and specifications are subject to change without notice. Actual usable space may vary from stated floor area. E.&O.E.

**FRONT ELEVATION** 1948 SQ.FT. - 3 BEDROOMS - 2 BATHROOMS

[TrilliumHomes.ca](http://TrilliumHomes.ca)



Plans and specifications are subject to change without notice. Actual usable space may vary from stated floor area. E.&O.E.