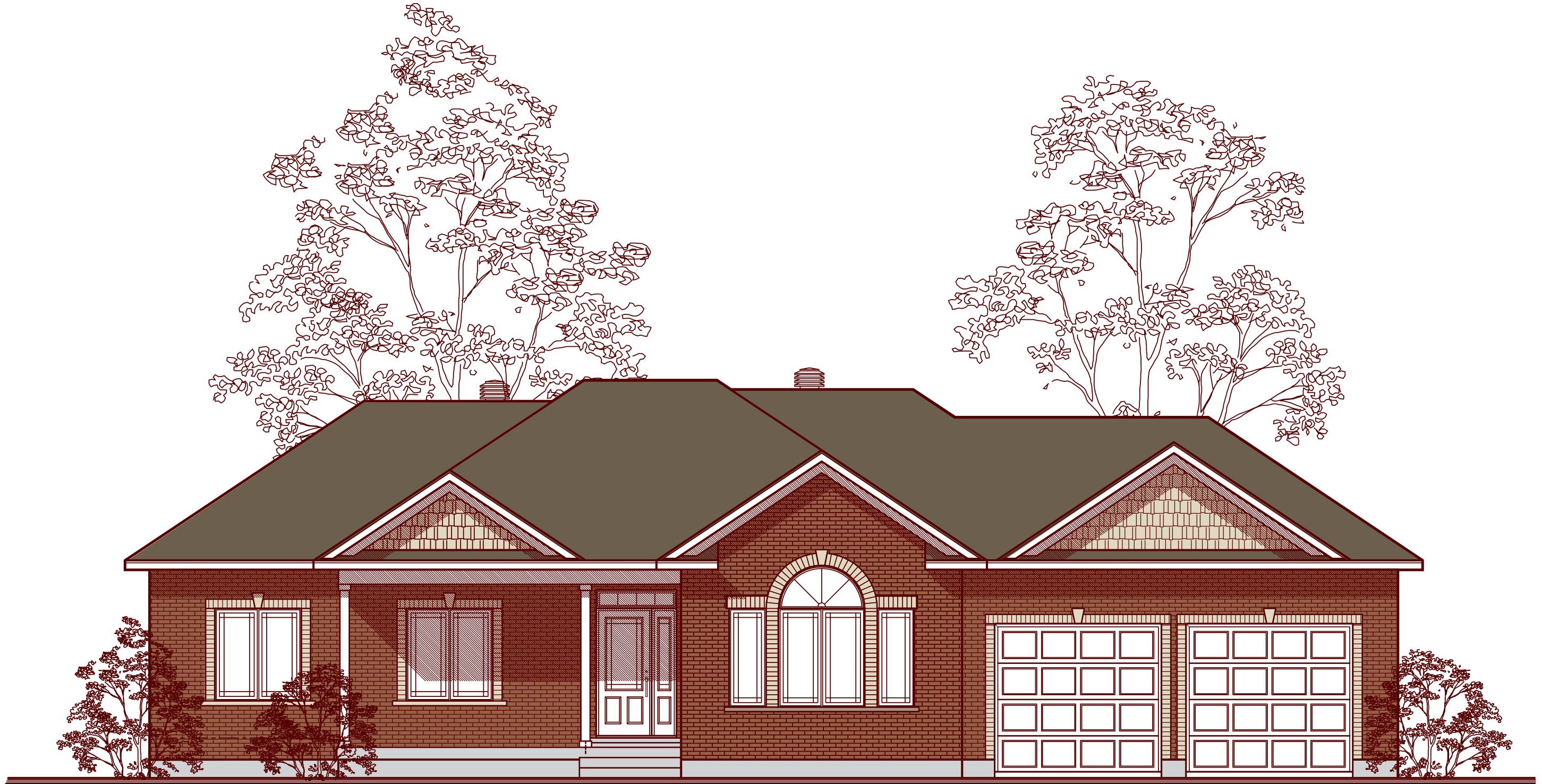


Crimson B

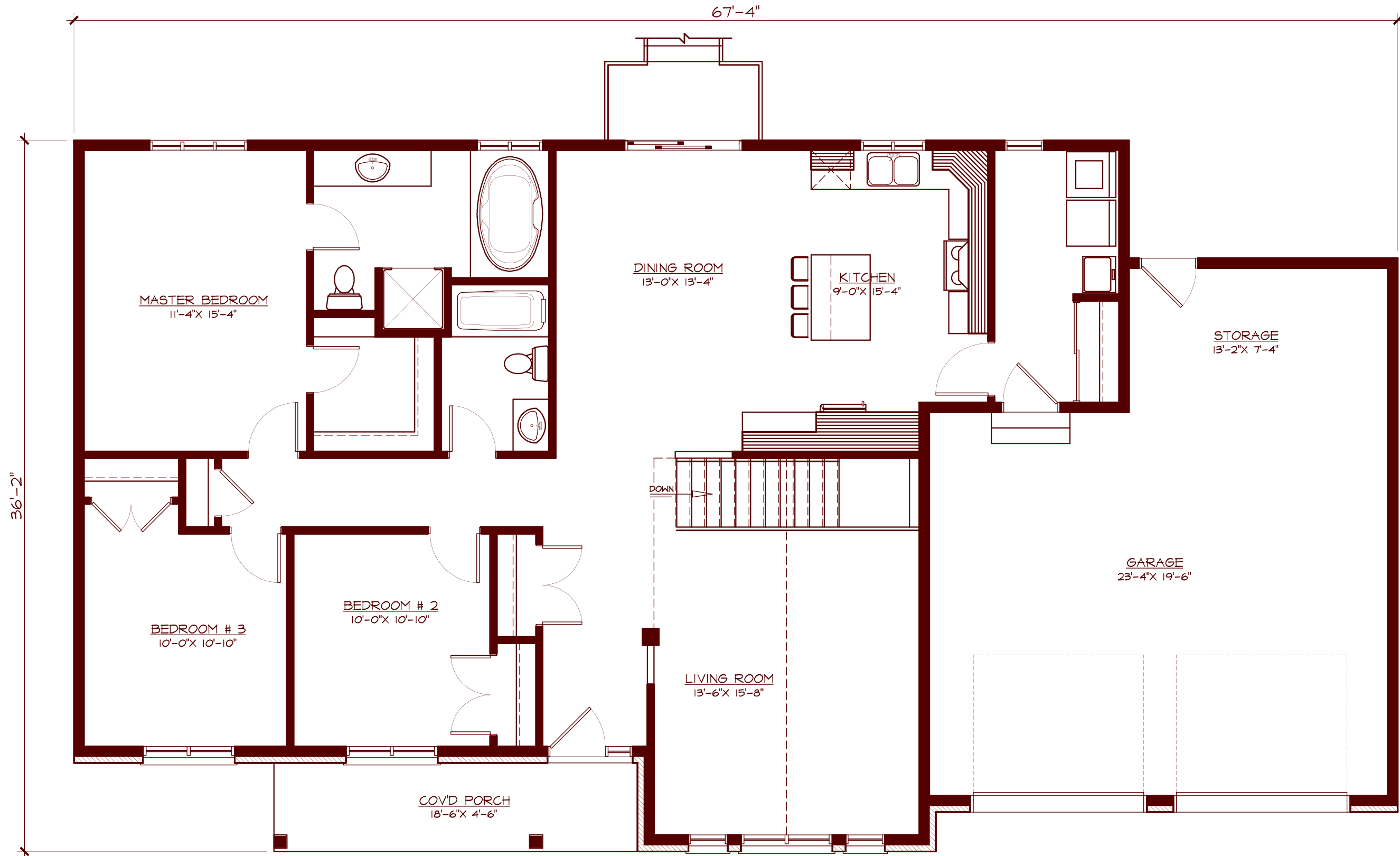


Plans and specifications are subject to change without notice. Actual usable space may vary from stated floor area. E.&O.E.

FRONT ELEVATION 1536 SQ.FT. - 3 BEDROOMS - 2 BATHROOMS

TrilliumHomes.ca

Crimson B



Plans and specifications are subject to change without notice. Actual usable space may vary from stated floor area. E.&O.E.