

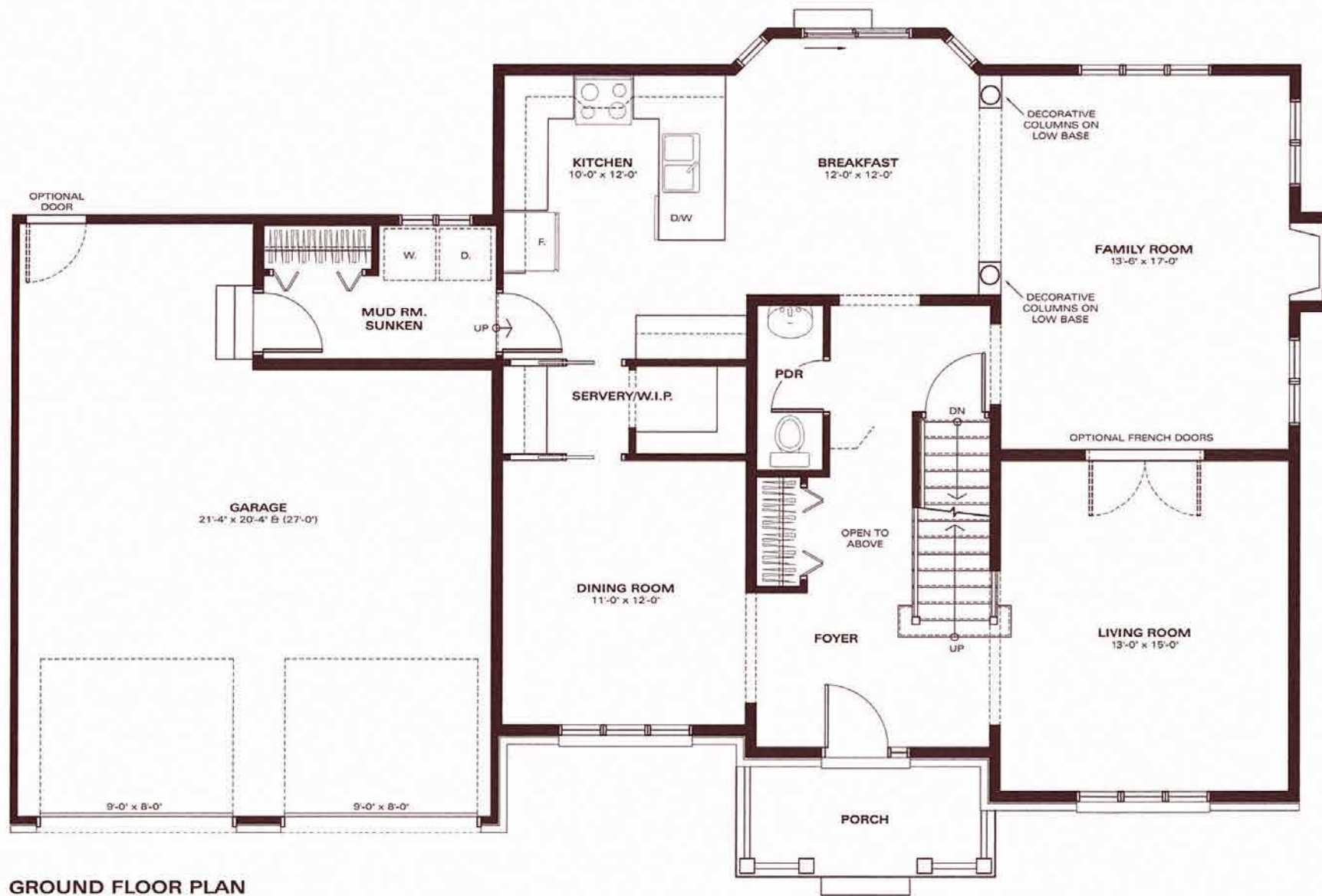
The Balsam



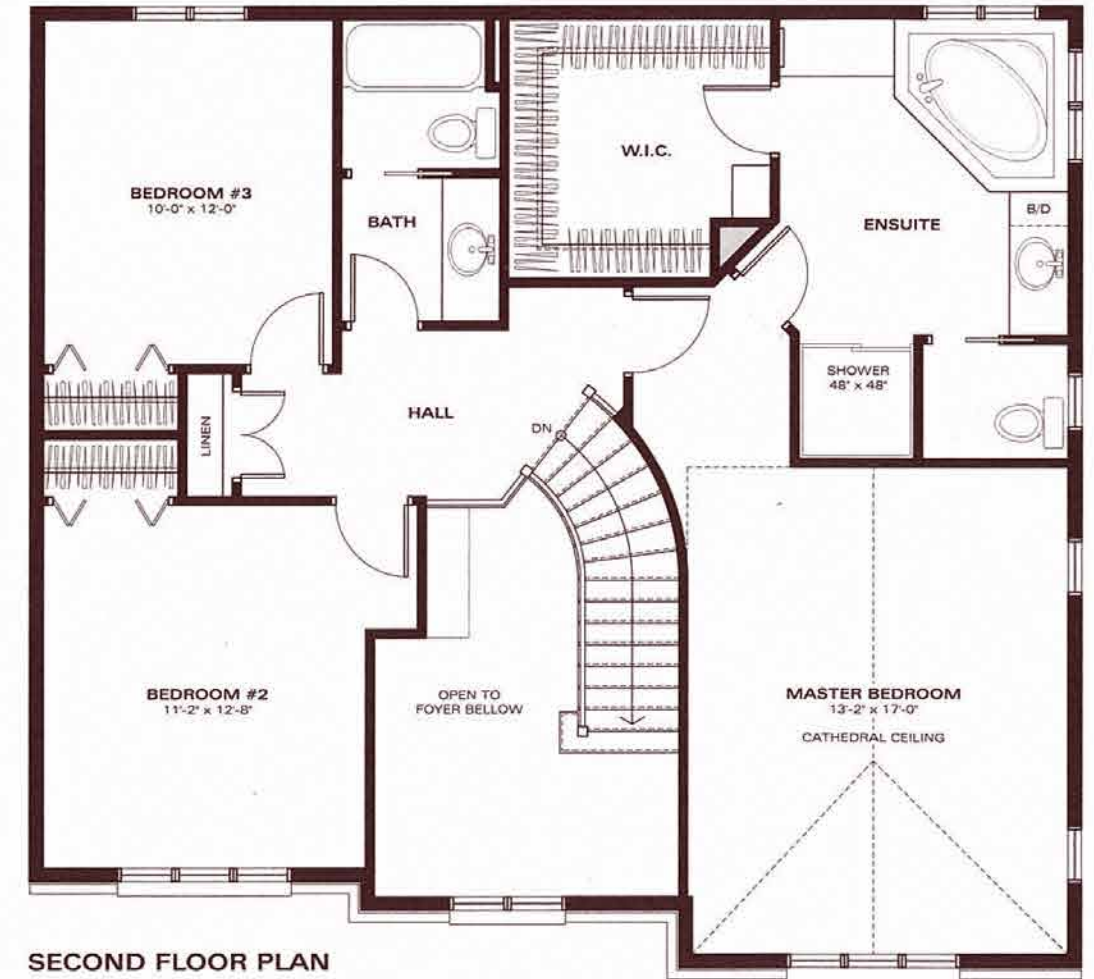
Plans and specifications are subject to change without notice. Actual Usable space may vary from stated floor area. E.&O.E.

FRONT ELEVATION 2340 SQ.FT. - 3 BEDROOMS - 2 BATHROOMS

TrilliumHomes.ca



GROUND FLOOR PLAN



SECOND FLOOR PLAN

Plans and specifications are subject to change without notice. Actual usable space may vary from stated floor area. E.&O.E.